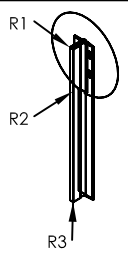
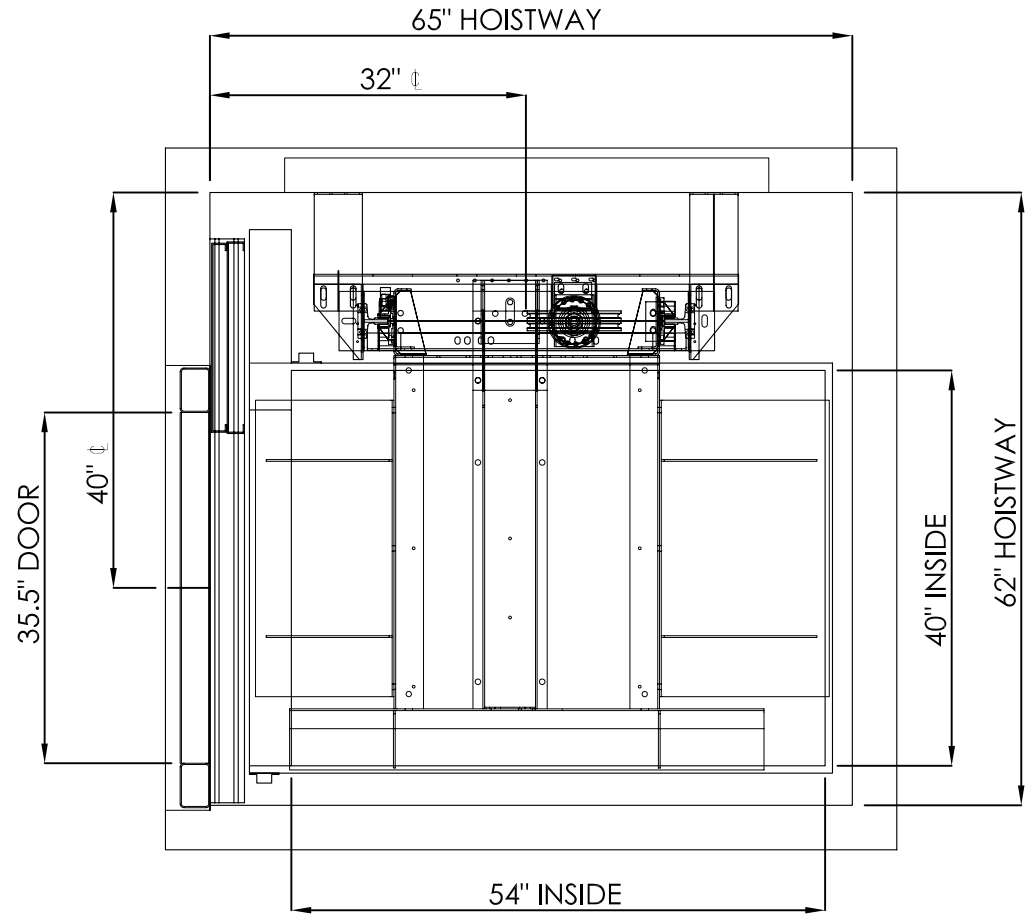
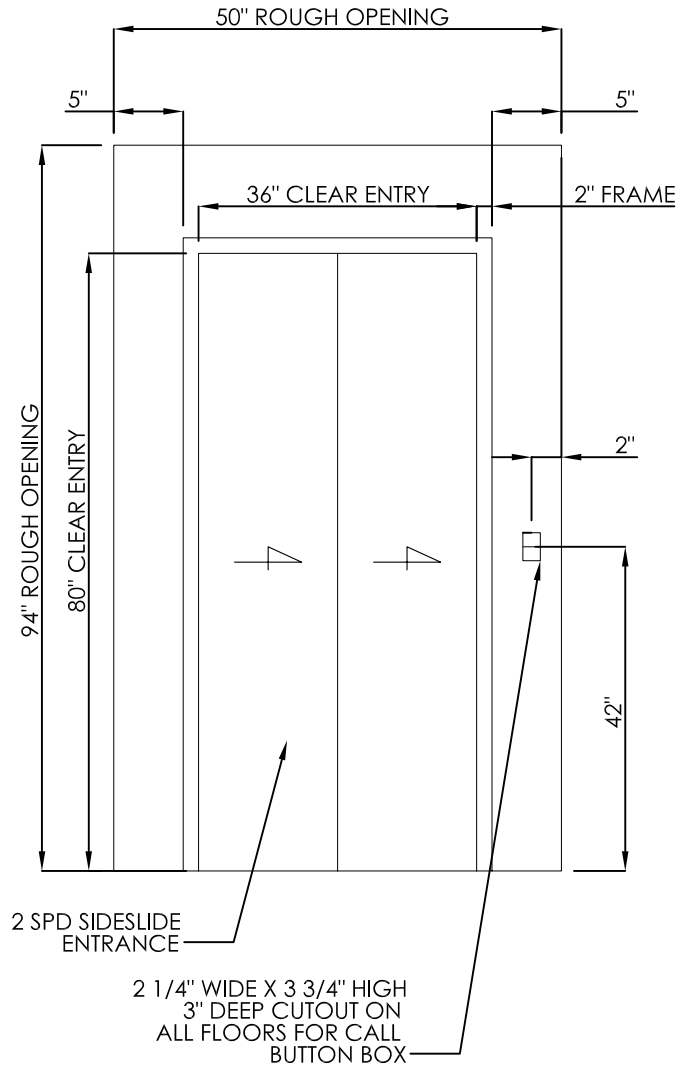


!WARNING!
SPACE BETWEEN DOOR AND HOISTWAY
MUST NOT EXCEED 3"

INTERLOCKS CONFORMING TO ASME A17.1
MUST BE INSTALLED AND ADJUSTED PER
THE MANUFACTURER'S INSTRUCTIONS.

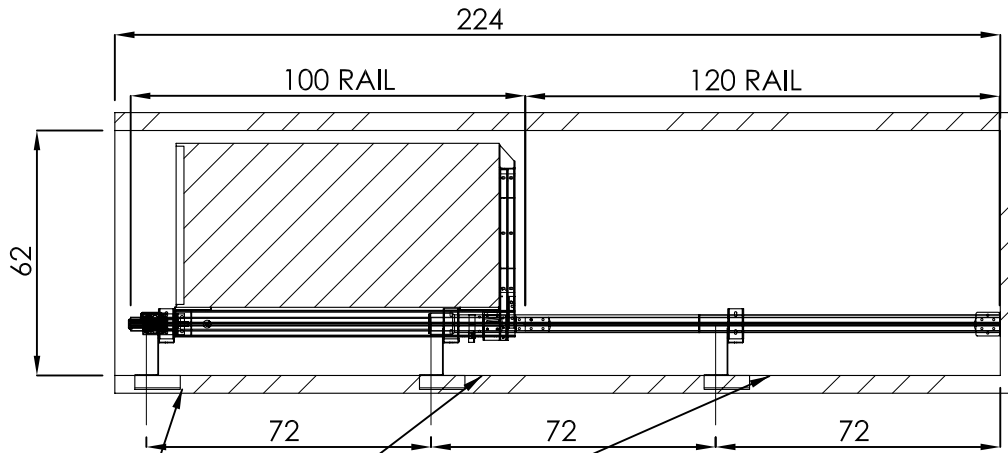
**!FAILURE TO COMPLY
MAY RESULT IN SERIOUS
INJURY OR DEATH!**

NOTE:
LEAVE ROUGH OPENING MIN
14" WIDER & 14" HIGHER THAN
CLEAR OPENING, AS SHOWN.



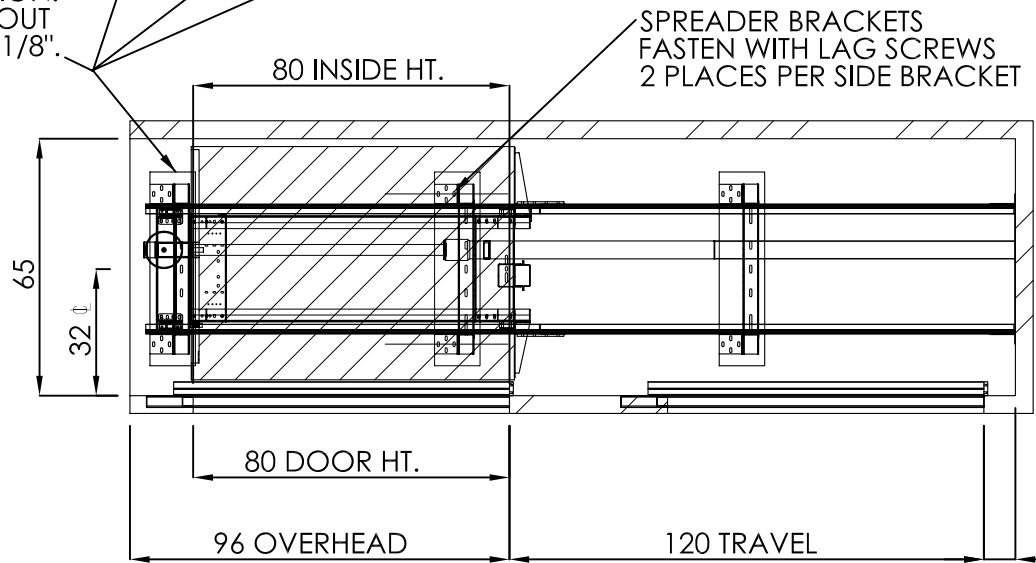
| | |
|-----------------------|----------|
| RAIL WEIGHT: 8 lbs/ft | |
| RAIL FORCES | |
| *R1(Fx) | 1075 lbs |
| *R2(Fy) | 358 lbs |
| R3(Fz) | 2500 lbs |


| | | |
|-----------------------------|--|-----------------------|
| SIZE | Nationwide Lifts www.elevators.com | |
| A | P: 888-695-4387 | E: info@elevators.com |
| PART NO. | | |
| 40 X 54, 1L | | |
| SHEET 1 OF 3 | | |
| DESCRIPTION: | | |
| SLIDING DOORS, HYDRO | | |

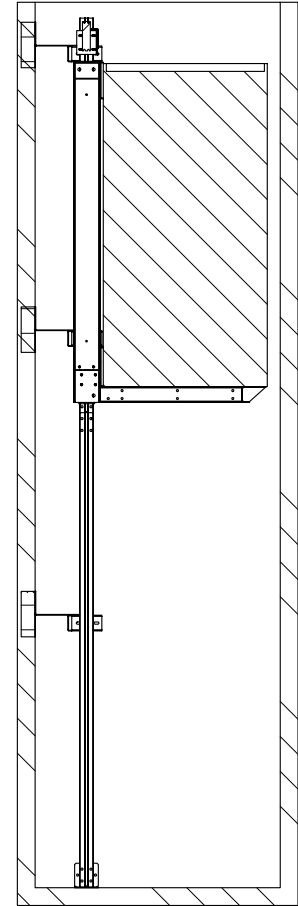
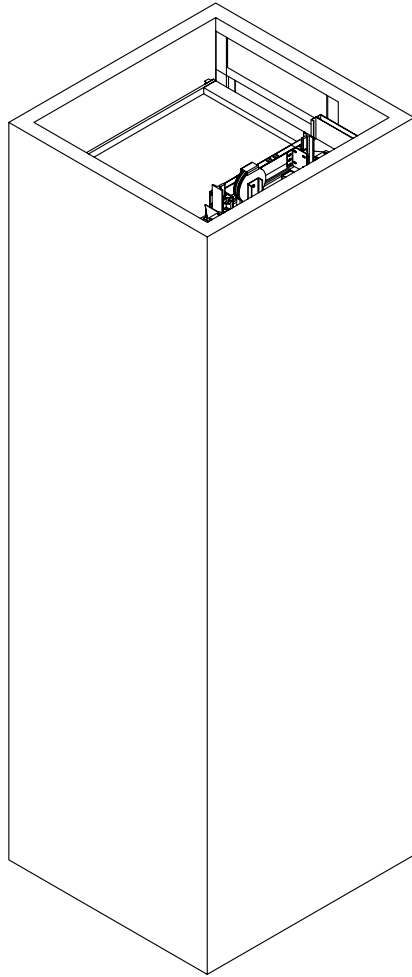
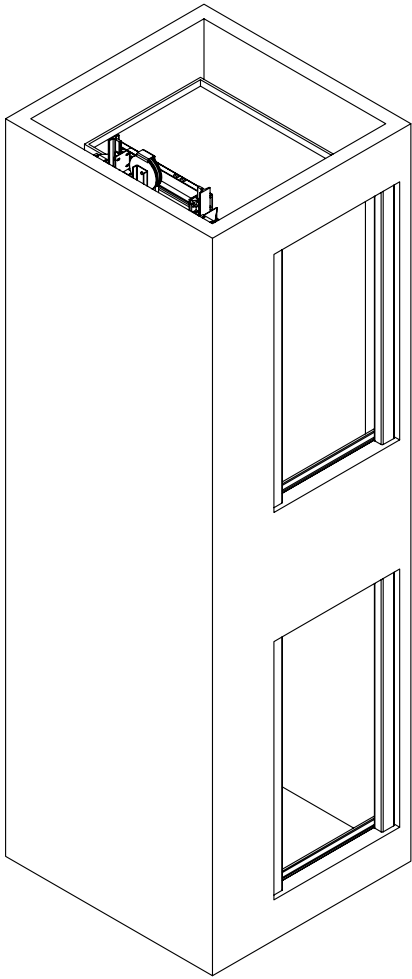


BRACKET LOCATIONS MAY VARY
ACCORDING TO TRAVEL

PROVIDE WALL CONSTRUCTION
SUITABLE FOR ATTACHMENT OF
RAIL BRACKETS AT SHOWN ELEVATION.
MUST BE CAPABLE OF 300LB PULLOUT
LOADING WITH MAX DEFLECTION OF 1/8".



| | |
|--------------|--|
| SIZE |  Nationwide Lifts www.elevators.com P: 888-695-4387 E: info@elevators.com |
| A | |
| PART NO. | 40 X 54, 1L |
| DESCRIPTION: | SLIDING DOORS, HYDRO |



5




4

3

2

1

| | |
|--------------------------------------|---|
| SIZE |  Nationwide Lifts www.elevators.com |
| A | |
| PART NO. | |
| 40 X 54, 1L | |
| SHEET 3 OF 3 | |
| DESCRIPTION: SLIDING DOORS, HYDRO | |